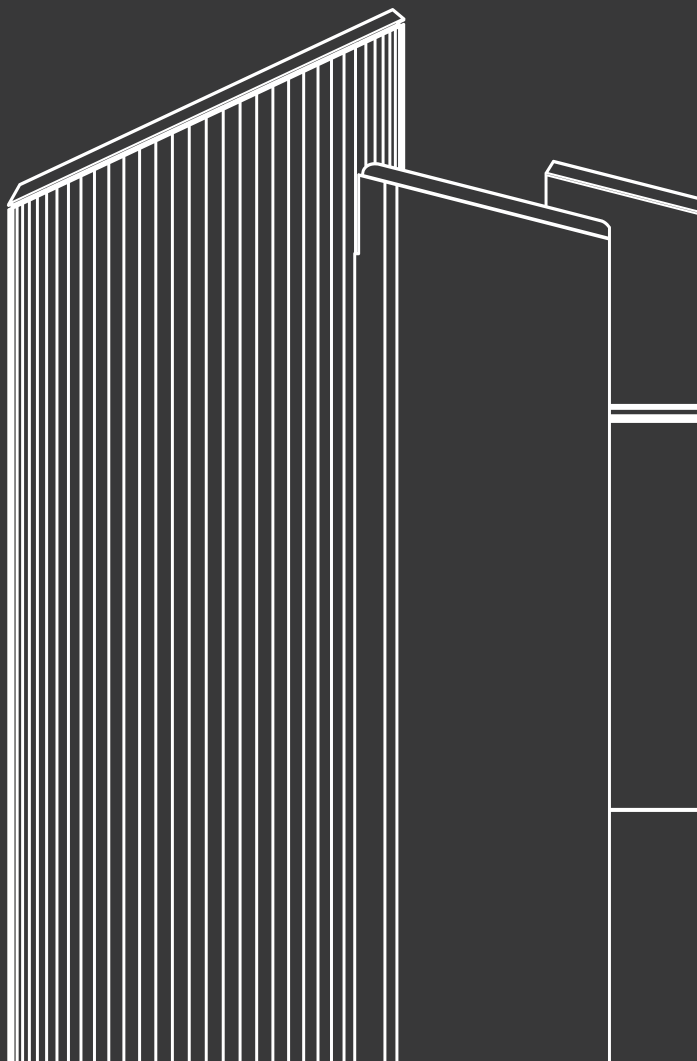


RAPIBREW™

FREDDA 1.0

AI Rapid Cold Brew Maker

User Manual



- Appliances can be used by persons with reduced physical, sensory or mental capabilities or lack of experience and knowledge if they have been given supervision or instruction concerning use of the appliance in a safe way and if they understand the hazards involved.
- Children shall not play with the appliance.
- Always disconnect the appliance from the power supply if it is left unattended and before assembling, disassembling or cleaning.
- If the power supply cord is damaged, it must be replaced by the manufacturer, its service agent.

Please read this manual carefully and keep it properly.

FREDDA is a brand-new type of cold brew maker. FREDDA, with patented and patent pending technologies for cold brew extraction in various countries, creates a new and efficient technique for cold brewing.



Through precise digital parameter control and accompanying cloud services, cold coffee and tea brewing process can be completed in just 3-5 minutes, which creates the most refreshing, pure, layered, smooth and mellow taste.

Contents

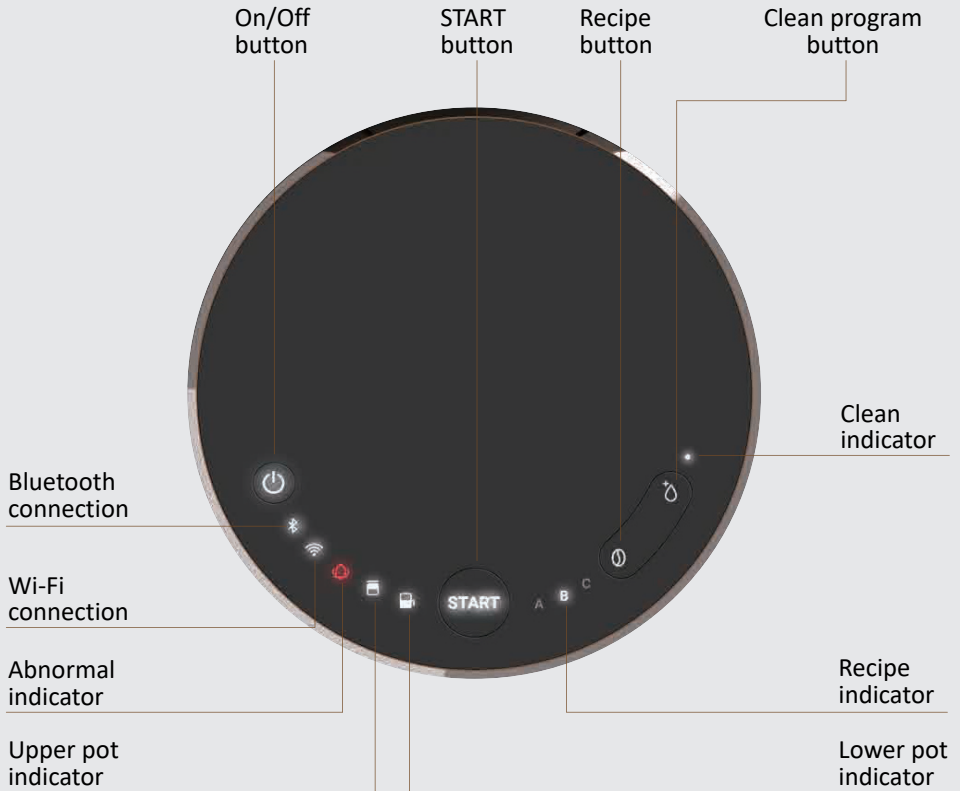
Features & Overview	1
Operation Panel	2
Coffee Brewing Guide	3
Coffee Brewing Process	4
Cleaning & Maintenance	5
Important Safeguards	9
Contact Us	10

Features & Overview

- The patented and patent pending technologies for cold brew extraction presents the best flavor of cold-extracted coffee and tea.
- Quick, ready-to-drink process (3-5 minutes) that is efficient and enhances the beverage quality
- Intelligent digital interface allows adjustment of parameters and formula creation for experts.
- Stable and consistent quality of cup output with high-precision digital control system.



Operation Panel



Button	Function
Recipe button	Click to switch between recipe A/B/C.
Clean program button	<ul style="list-style-type: none"> Short press for 1 second to select general cleaning mode. Long press for 3 seconds to select detergent cleaning mode.
START button	<ul style="list-style-type: none"> Short press for 1 second to start beverage-making or cleaning program, or stop the beverage-making process. Long press for 5 seconds to start forced extraction mode (can be performed before the upper and lower pots are moved at the end of the same extraction procedure). Short press again during operation to stop forced extraction.
On/Off button	<ul style="list-style-type: none"> Use the On/Off button to power on or off the cold brew maker or to start or stop the brew cycle. To end the brew cycle, press the On/Off button once and press again to restart the cold brew maker.

Coffee Brewing Guide

First-time use of FREDDA

- Brew Ratio : 1:10~1:8 (recommended)
- Grind Size : Between fine to medium and medium to coarse
- Water Temperature : 4°C~40°C (recommended). Do not go over 40°C.
- Ground coffee and water in the upper pot should not exceed the Max mark.
- Maximum output capacity : 750 ml

Adjust FREDDA parameters

- Download the RAPIBREW FREDDA app from Google Play Store or App Store for a better experience.
- The default Bluetooth passcode of the app to connect with FREDDA is "0000".



Coffee Brewing Process

1. Place the filter paper into the filter module.



2. Press pressure ring over the filter paper.



3. Put the filter module into the upper pot and press down firmly to the bottom of the pot.



4. Position upper and lower pots.



5. Pour coffee grounds and water into upper pot; then close the top cover.



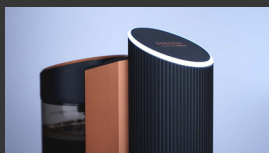
6. Click **Recipe** button continuously until the selected recipe light is on.



7. Click **START** button to operate when the light indicators of upper and lower pots are on.



8. Brewing begins according to recipe setting. Status light blinks showing brewing is in progress.



9. The sealing platform rises once process completes. Take the lower pot out and enjoy coffee.



Notes:

- If the coffee extraction is completed during the extraction process, short press the **Start** button for 1 second to stop extraction.
- Do not detach the upper and lower pots if there is liquid remaining in the upper pot after the extraction process is completed. Long press the **Start** button for 5 seconds to start force extraction and short press the **Start** button for 1 second to stop force extraction.

Cleaning & Maintenance

Wash filter module, upper pot, lower pot, and ground tray after each use.

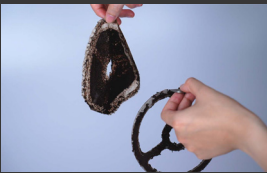
1. Take out the filter module.



2. Turn pressure ring to collect coffee grounds.



3. Remove pressure ring and discard filter paper.



4. Wash filter module, upper and lower pots well, and make sure that there is no residue left in the bottom filter of the upper pot.



5. Wipe off any coffee liquid on the ground tray.



6. Rotate counterclockwise to remove and rinse the ground tray if coffee grounds drop on the tray. Clean and wipe dry. Install it clockwise.



Cleaning & Maintenance

Cleaning frequency can be adjusted according to actual use.

Top cover cleaning

Attach ground tray properly.

1. Take off stirrer.



2. Take off top inner cover.



3. Wipe lid and stirrer dry. Install them in order.



Ground tray cleaning

Clean ground tray well before use.

1. Wipe off any coffee liquid on the ground tray.



2. Rotate counterclockwise to remove and rinse the ground tray if coffee grounds drop on the tray.



3. Avoid coffee grounds from dropping into the pipe which can damage FREDDA. Clean and wipe dry. Install it clockwise.



Cleaning & Maintenance

Clean pipes with water

Pipe cleaning frequency depends on conditions of use.

Please clean when encountering the scenarios below:

- When the cleaning light is on
- Before use each day
- After the last use each day
- When brewing different coffee beans

1. Pour 500ml water (below 40°C) in the upper pot.



2. Select **Clean program** button and click **START** button.



3. Wipe the sealing platform clean.



Cleaning & Maintenance

Clean pipes with detergent

It is suggested to clean the pipe with detergent after cleaning it with water after use. Depending on the frequency of use, adjust detergent wash time.

1. Long press the **Clean** button for 3 seconds to choose Detergent-cleaning mode. The CLEAN and START lights will flicker.



2. Fetch about 500ml of clean water at 20-40°C in a container. Put in the detergent powder or tablet and stir well.



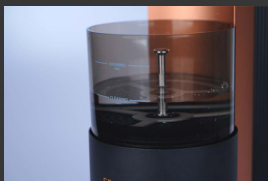
3. Place the cleaned upper and lower pots. Pour detergent into upper pot. Tighten upper lid.



4. Press **START** to begin. Let the detergent soak in the pipe for 5 minutes and pump it to complete cleaning until the platform is elevated.



5. Pour in about 500ml clean water at 20-40°C inside. Select Water-clean mode. Clean pipe for at least 3 times until there is no residue in it.



6. Clean the lower pot after elevating the platform. Wipe the bottom of the platform with a soft wet cloth.



7. Brew any coffee to remove the smell of the detergent before the next use.

Important Safeguards

1. Please read all instructions before use.
2. Use only FREDDA exclusive accessories. Install all parts before you begin operation.
3. The upper pot, lower pot, filter, ground tray, stirrer, and top inner cover can be removed for cleaning. Do not immerse FREDDA into water or other liquid except for the above mentioned parts.
4. If FREDDA accidentally falls into liquid, first unplug the machine; then take out the coffee machine immediately.
5. FREDDA can only use cold water. **Do not pour water over 40°C to avoid damage to FREDDA.**
6. During operation, opening the lid or unplugging the power cord can result in abnormal interruption. Besides damaging the stirrer, the flavor of used ingredients may be spoiled because of interrupted process. When it is necessary to stop brewing, please press On/Off button to turn off the power. Press On/Off button again to turn on the power to make sure mechanical components and processes return to initial settings.
7. Before you install or remove any detachable part or pots, make sure FREDDA is powered off or in standby.
8. Install the ground tray before positioning the upper pot. Make sure the ground tray is properly installed before taking off the top inner cover and stirrer to avoid any coffee grounds from dropping into the pipe.
9. Replace pots if cracked or damaged. Cracked or damaged pots may cause failed operation.
10. Do not use corrosive cleaning agents to wipe or clean the casing and accessories.
11. Repairs should only be performed by authorized personnel. Do not disassemble components by yourself to avoid personal injury, machine damage, or other unexpected risks.
12. Make sure that the operating voltage is 100~240V.

Contact Us

Website

RAPIBREW.COM

E-mail

service@rapibrew.com

