

RAPIBREW™

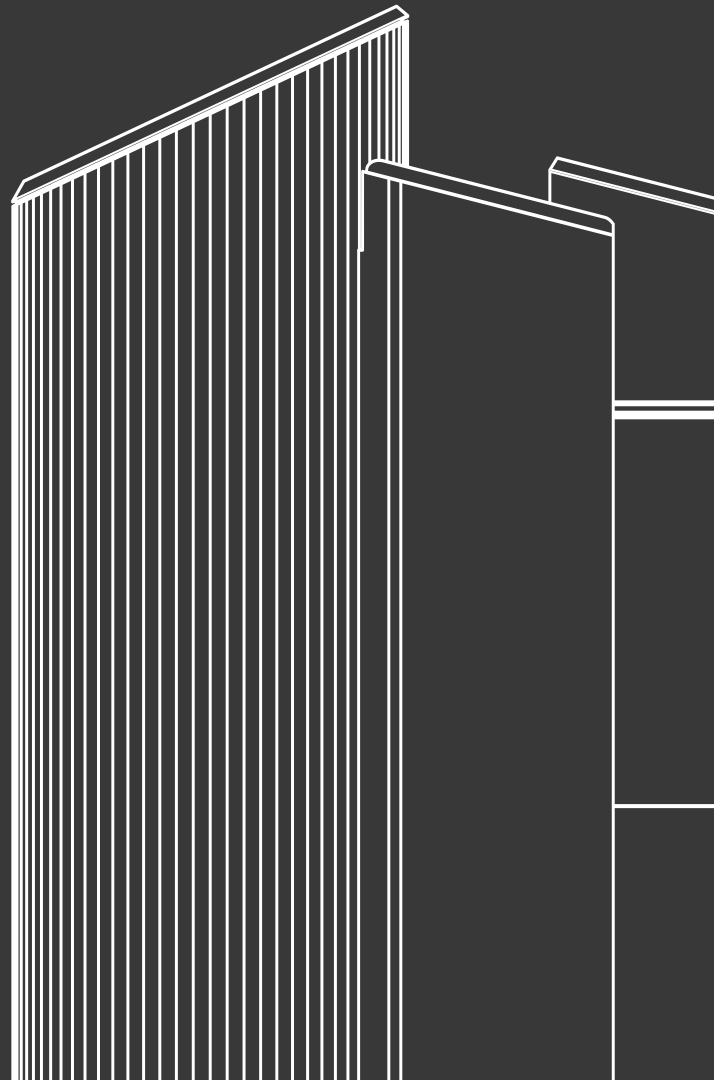
FREDDA 1.0

AI Rapid Cold Brew Maker

極速冷萃機

User Manual

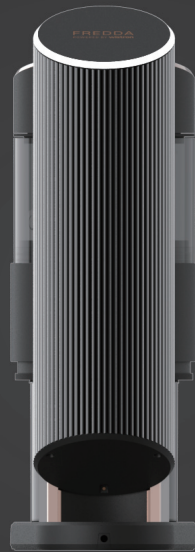
使用手冊



- Appliances can be used by persons with reduced physical, sensory or mental capabilities or lack of experience and knowledge if they have been given supervision or instruction concerning use of the appliance in a safe way and if they understand the hazards involved.
- Children shall not play with the appliance.
- Always disconnect the appliance from the power supply if it is left unattended and before assembling, disassembling or cleaning.
- If the power supply cord is damaged, it must be replaced by the manufacturer, its service agent.

Please read this manual carefully and keep it properly.

FREDDA is a brand-new type of cold brew maker. FREDDA, with patented and patent pending technologies for cold brew extraction in various countries, creates a new and efficient technique for cold brewing.



Through precise digital parameter control and accompanying cloud services, cold coffee and tea brewing process can be completed in just 3-5 minutes, which creates the most refreshing, pure, layered, smooth and mellow taste.

Contents

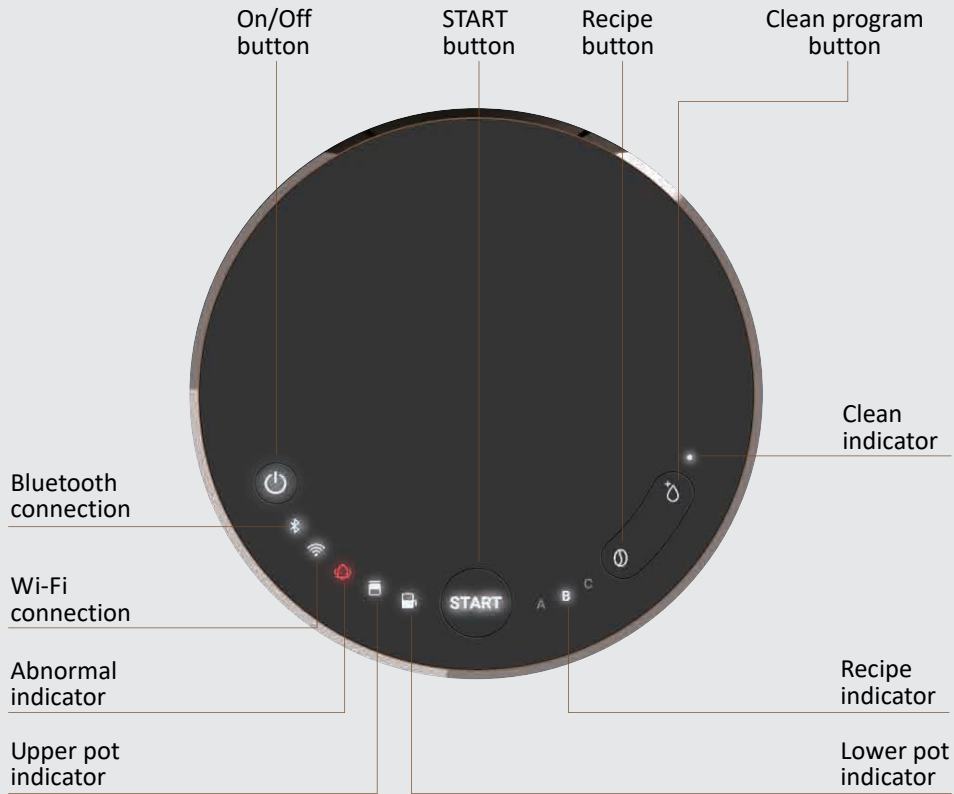
Features & Overview	1
Operation Panel	2
Coffee Brewing Guide	3
Coffee Brewing Process	4
Cleaning & Maintenance	5
Important Safeguards	9
Contact Us	10

Features & Overview

- The patented and patent pending technologies for cold brew extraction presents the best flavor of cold-extracted coffee and tea.
- Quick, ready-to-drink process (3-5 minutes) that is efficient and enhances the beverage quality
- Intelligent digital interface allows adjustment of parameters and formula creation for experts.
- Stable and consistent quality of cup output with high-precision digital control system.



Operation Panel



Button	Function
Recipe button	Click to switch between recipe A/B/C.
Clean program button	<ul style="list-style-type: none"> • Short press for 1 second to select general cleaning mode. • Long press for 3 seconds to select detergent cleaning mode.
START button	<ul style="list-style-type: none"> • Short press for 1 second to start beverage-making or cleaning program, or stop the beverage-making process. • Long press for 5 seconds to start forced extraction mode (can be performed before the upper and lower pots are moved at the end of the same extraction procedure). Short press again during operation to stop forced extraction.
On/Off button	<ul style="list-style-type: none"> • Use the On/Off button to power on or off the cold brew maker or to start or stop the brew cycle. • To end the brew cycle, press the On/Off button once and press again to restart the cold brew maker.

Coffee Brewing Guide

First-time use of FREDDA

- Brew Ratio : 1:10~1:8 (recommended)
- Grind Size : Between fine to medium and medium to coarse
- Water Temperature : 4°C~40°C (recommended). Do not go over 40°C.
- Ground coffee and water in the upper pot should not exceed the Max mark.
- Maximum output capacity : 750 ml

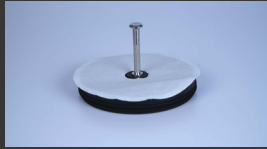
Adjust FREDDA parameters

- Download the RAPIBREW FREDDA app from Google Play Store or App Store for a better experience.
- The default Bluetooth passcode of the app to connect with FREDDA is "0000".



Coffee Brewing Process

1. Place the filter paper into the filter module.



2. Press pressure ring over the filter paper.



3. Put the filter module into the upper pot and press down firmly to the bottom of the pot.



4. Position upper and lower pots.



5. Pour coffee grounds and water into upper pot; then close the top cover.



6. Click **Recipe** button continuously until the selected recipe light is on.



7. Click **START** button to operate when the light indicators of upper and lower pots are on.



8. Brewing begins according to recipe setting. Status light blinks showing brewing is in progress.



9. The sealing platform rises once process completes. Take the lower pot out and enjoy coffee.



Notes:

- If the coffee extraction is completed during the extraction process, short press the **Start** button for 1 second to stop extraction.
- Do not detach the upper and lower pots if there is liquid remaining in the upper pot after the extraction process is completed. Long press the **Start** button for 5 seconds to start force extraction and short press the **Start** button for 1 second to stop force extraction.

Cleaning & Maintenance

Wash filter module, upper pot, lower pot, and ground tray after each use.

1. Take out the filter module.



2. Turn pressure ring to collect coffee grounds.



3. Remove pressure ring and discard filter paper.



4. Wash filter module, upper and lower pots well, and make sure that there is no residue left in the bottom filter of the upper pot.



5. Wipe off any coffee liquid on the ground tray.



6. Rotate counterclockwise to remove and rinse the ground tray if coffee grounds drop on the tray. Clean and wipe dry. Install it clockwise.



Cleaning & Maintenance

Cleaning frequency can be adjusted according to actual use.

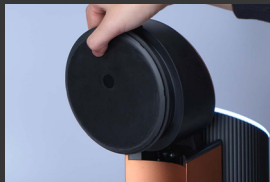
Top cover cleaning

Attach ground tray properly.

1. Take off stirrer.



2. Take off top inner cover.



3. Wipe lid and stirrer dry. Install them in order.



Ground tray cleaning

Clean ground tray well before use.

1. Wipe off any coffee liquid on the ground tray.



2. Rotate counterclockwise to remove and rinse the ground tray if coffee grounds drop on the tray.



3. Avoid coffee grounds from dropping into the pipe which can damage FREDDA. Clean and wipe dry. Install it clockwise.



Cleaning & Maintenance

Clean pipes with water

Pipe cleaning frequency depends on conditions of use.

Please clean when encountering the scenarios below:

- When the cleaning light is on
- Before use each day
- After the last use each day
- When brewing different coffee beans

1. Pour 500ml water (below 40°C) in the upper pot.



2. Select **Clean program** button and click **START** button.



3. Wipe the sealing platform clean.



Cleaning & Maintenance

Clean pipes with detergent

It is suggested to clean the pipe with detergent after cleaning it with water after use. Depending on the frequency of use, adjust detergent wash time.

1. Long press the **Clean** button for 3 seconds to choose Detergent-cleaning mode. The **CLEAN** and **START** lights will flicker.



2. Fetch about 500ml of clean water at 20-40°C in a container. Put in the detergent powder or tablet and stir well.



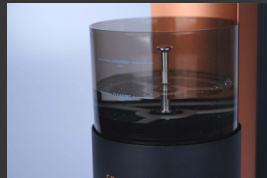
3. Place the cleaned upper and lower pots. Pour detergent into upper pot. Tighten upper lid.



4. Press **START** to begin. Let the detergent soak in the pipe for 5 minutes and pump it to complete cleaning until the platform is elevated.



5. Pour in about 500ml clean water at 20-40°C inside. Select Water-clean mode. Clean pipe for at least 3 times until there is no residue in it.



6. Clean the lower pot after elevating the platform. Wipe the bottom of the platform with a soft wet cloth.



7. Brew any coffee to remove the smell of the detergent before the next use.

Important Safeguards

1. Please read all instructions before use.
2. Use only FREDDA exclusive accessories. Install all parts before you begin operation.
3. The upper pot, lower pot, filter, ground tray, stirrer, and top inner cover can be removed for cleaning. Do not immerse FREDDA into water or other liquid except for the above mentioned parts.
4. If FREDDA accidentally falls into liquid, first unplug the machine; then take out the coffee machine immediately.
5. FREDDA can only use cold water. **Do not pour water over 40°C to avoid damage to FREDDA.**
6. During operation, opening the lid or unplugging the power cord can result in abnormal interruption. Besides damaging the stirrer, the flavor of used ingredients may be spoiled because of interrupted process. When it is necessary to stop brewing, please press On/Off button to turn off the power. Press On/Off button again to turn on the power to make sure mechanical components and processes return to initial settings.
7. Before you install or remove any detachable part or pots, make sure FREDDA is powered off or in standby.
8. Install the ground tray before positioning the upper pot. Make sure the ground tray is properly installed before taking off the top inner cover and stirrer to avoid any coffee grounds from dropping into the pipe.
9. Replace pots if cracked or damaged. Cracked or damaged pots may cause failed operation.
10. Do not use corrosive cleaning agents to wipe or clean the casing and accessories.
11. Repairs should only be performed by authorized personnel. Do not disassemble components by yourself to avoid personal injury, machine damage, or other unexpected risks.
12. Make sure that the operating voltage is 100~240V.

Contact Us

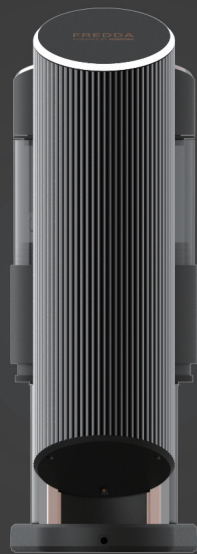
Website

RAPIBREW.COM

E-mail

service@rapibrew.com

FREDDA 是全新型態的冷萃機
專利 FREDDA 低溫萃取技術創造低溫飲品製作的全新工藝



通過精準數位參數控制並連結雲服務
實現冷萃咖啡、冷萃茶飲製程在 3-5 分鐘完成，
表現最清新、純粹、層次分明、滑順圓潤且令人感動的飲品風味。

目錄

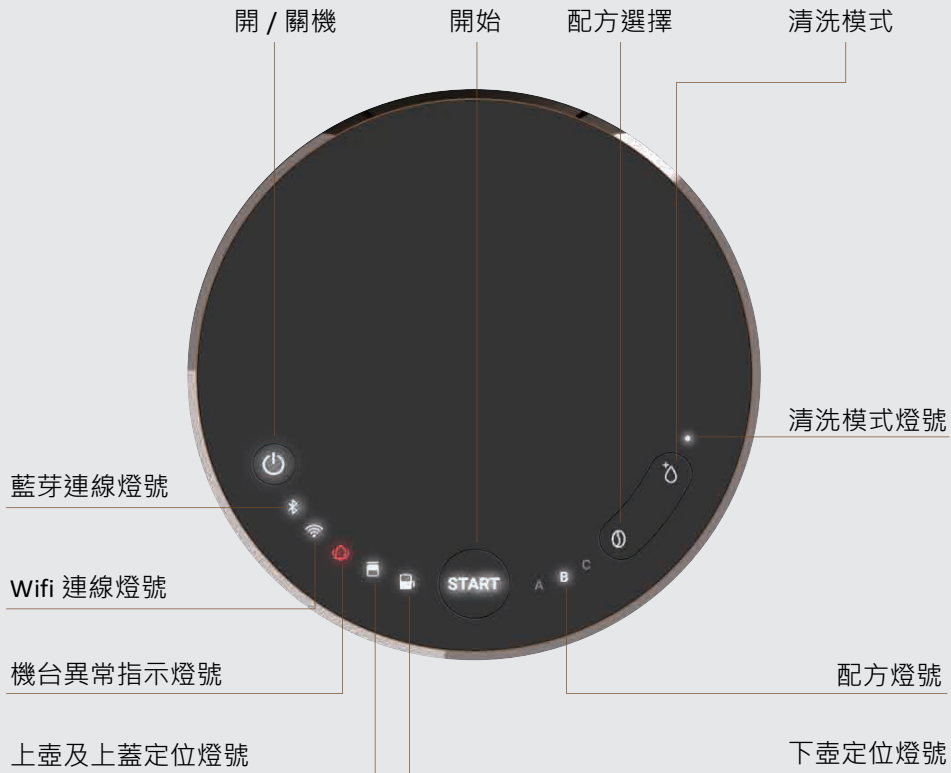
特色與概述	1
控制面板	2
咖啡沖泡指南	3
冷萃咖啡製作流程	4
清潔與保養	5
安全注意事項	9
聯絡我們	10

特色與概述

- 低溫萃取，展現冷萃咖啡與茶飲的最佳風味
- 3-5 分鐘即飲製程，提升萃取效率及飲品品質
- 智能數位介面，提供專家調配參數、創造配方
- 數位系統精準控制，出杯品質穩定與保持一致



控制面板



按鈕	功能
配方選擇按鍵	切換選擇 A/B/C 配方
清洗模式按鍵	<ul style="list-style-type: none"> 短按 1 秒，即選擇一般清洗模式 長按 3 秒，即選擇清潔劑清洗模式
開始按鍵	<ul style="list-style-type: none"> 短按 1 秒，啟動飲品製作或清洗行程、停止飲品製作行程 長按 5 秒，啟動強制抽取模式 (在同一次萃取行程結束未移動上下壺之前可再進行強制抽取)，運行中再次短按可停止強制抽取
開 / 關機按鍵	<ul style="list-style-type: none"> 啟動或切斷電源 製作中若要停止製作程序，按下關機後重新開機，以結束程序並回到初始定位值

咖啡沖泡指南

初次使用 FREDDA

- 咖啡粉水比：單品建議 1:10~1:8
- 研磨度：建議手沖研磨刻度 (中偏細 ~ 中偏粗)
- 水溫：4°C~40°C 水溫 (請勿使用 40°C 以上熱水)
- 上壺粉水容量請勿超過 Max 標示
- 本機最大產出容量 750ml

使用 FREDDA 調整參數

- 請至 Google Play Store 或是 App Store 下載 “RAPIBREW FREDDA”。
- 開啟 APP 後，請選擇 FREDDA 機器名稱，並輸入預設密碼 “0000” 進行連線。



冷萃咖啡製作流程

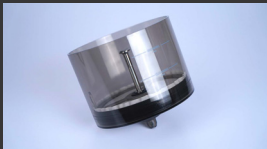
1. 將濾紙套進過濾模組。



2. 安裝壓環並將濾紙壓緊。



3. 將過濾模組放進上壺並推至壺底壓緊。



4. 將上下壺放至定位。



5. 倒粉水於上壺並關上上蓋。



6. 連按配方選擇按鍵選擇配方。



7. 當上下壺定位燈皆亮，即可按下啟動鍵開始冷萃。



8. 依配方設定進行咖啡製作，光圈閃爍顯示行程進行中。



9. 萃取完成後平臺上升，即可取出下壺享用咖啡。



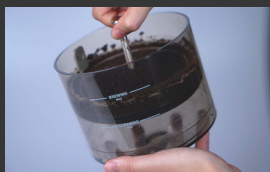
附註：

- 萃取中若目視咖啡已萃取完畢，可短按開始鍵 1 秒停止。
- 若已完成萃取行程，上壺仍有液體殘留，請勿移動上下壺，長按開始鍵 5 秒啟動強制抽取行程，運行中短按開始鍵 1 秒即可停止強制抽取。

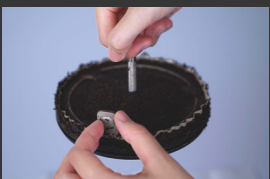
清潔與保養

每次製作後須清洗過濾模組及上下壺，並清理接盤

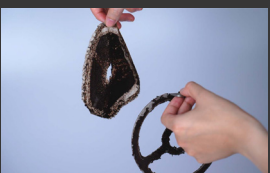
1. 抽出過濾模組。



2. 旋轉壓環將咖啡渣刮入粉渣槽。



3. 取出壓環丟棄濾紙。



4. 將過濾模組及上下壺沖洗乾淨，並確認上壺底部濾網沒有細粉殘留。



5. 若接盤有殘留咖啡液，用紙巾擦拭乾淨。



6. 若接盤中有咖啡渣，逆時針旋轉後上提取出沖洗後，擦乾並順時針旋轉裝回。



清潔與保養

機台常態清潔，頻率依實際使用狀況調整

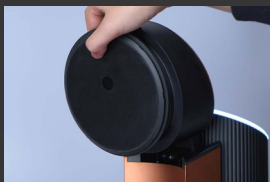
上蓋清潔

清理前請確認接盤已放妥

1. 取下攪拌棒。



2. 取下防潑蓋。



3. 將防潑蓋及攪拌棒清洗後擦乾，再依序裝回上蓋。



接盤清潔

清理前請確認上蓋已清潔乾淨

1. 若接盤有殘留咖啡液，用紙巾擦拭乾淨。



2. 若接盤中有咖啡渣，逆時針旋轉後上提取出沖洗。



3. 避免咖啡渣落入接盤下方出水孔，以免堵塞管路；清洗時擦乾順時針旋轉裝回。



清潔與保養

機台管路清洗

頻率依實際使用狀況調整，以下情況請執行清洗模式清理水路：

- 當清洗提示燈閃爍時
- 當日首次使用前
- 當日末次使用後
- 更換不同種類咖啡豆

1. 放置乾淨上下壺，於上壺注入約 500ml 清水。



2. 短按清洗選擇鍵一秒，即選擇一般清洗模式，按 **START** 鍵啟動。



3. 平臺上升後清洗下壺，用濕軟布輕拭升降平臺下方。



清潔與保養

機台管路清潔劑清洗

建議每日末次使用並完成機台清水清洗後進行一次機台管路清潔劑清洗，可視使用頻率調整清潔劑清洗的時間間距。

1. 長按清潔選擇鍵 3 秒，選擇清潔劑清洗模式，此時，清洗燈及 START 燈快速閃爍。



2. 取一容器使用 500ml 20-40°C 清水將清潔粉或藥錠攪拌溶解均勻。



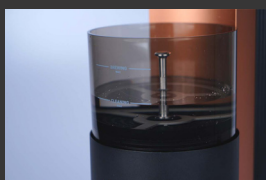
3. 放置乾淨上下壺，並將溶解之清潔液倒入上壺，闔上上蓋。



4. 按 **START** 鍵啟動執行，清潔液將停留於管路浸泡 5 分鐘後抽取完成，平台上升。



5. 倒入約 500ml 20-40°C 清水，選擇清水清洗模式洗清管路至少 3 次，直到沒有清潔劑殘留於管路中。



6. 平臺上升後清洗下壺，用濕軟布輕拭升降平臺下方。



7. 下次使用前先泡咖啡去除清潔劑異味。

安全注意事項

1. 請閱讀所有說明後再使用。
2. 請使用本機台專屬部件及配件，並完整安裝機台各部件後操作機器。
3. 除了上下壺、過濾模組、接盤、攪拌棒及防潑蓋等可拆部件可用水沖洗，請勿將機體任何部分浸入水中或任何液體以免觸電或損壞。
4. 若咖啡機不慎掉進液體中，請先拔除插頭，再立即取出咖啡機，切勿沒先拔插頭就直接接觸液體。
5. 本機台僅可使用冷水，請勿使用 40°C 以上熱水，以免造成機台損害。
6. 本機台運行中任意開啟上蓋或拔除電源線會造成不正常中斷，除可能造成攪拌棒受損外，本次製作所使用的材料因程序中斷可能造成風味不佳。若必須中斷咖啡製作程序，請按電源鍵關閉電源，再按一次電源鍵開啟電源，以確保機械元件及程序回到初始定位值。
7. 安裝或取下各可拆部件或上下壺，請確保機台為關閉電源或待機狀態。
8. 為避免咖啡渣掉落造成管路阻塞，請務必安裝接盤後再安裝上壺，並在接盤安裝狀況下拆卸攪拌棒及防潑蓋做清洗。
9. 若發現上下壺有裂痕或損壞，請立即更換新的上下壺。切勿使用有裂痕或損壞的上下壺，可能造成機台運行失敗。
10. 請勿使用具腐蝕性之清潔藥劑擦拭或清洗機身及配件。
11. 維修應由經過原廠授權的人員進行，切勿自行拆卸機台零組件，以免造成人員受傷、機台損壞或不可預期之其他風險。
12. 請確保您的使用電壓符合機台標明之伏特數 100~240V。

聯絡我們

官網

RAPIBREW.COM

郵箱

service@rapibrew.com

